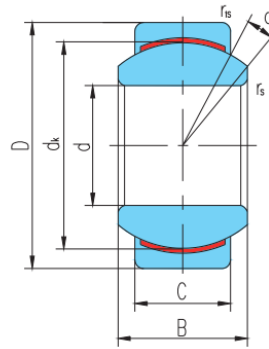


GE...C(d 4□50)



Seleccione Consulta	Número de rodamiento	Dimensiones (mm)									Clasificación de carga básica (kN)		Peso corazón kg
		dk	D	segundo :	do:	dk	rs min	r1s min	un°	cr	corazón		
GE4C	4	12	5	3	8	0.3	0.3	16	2.1	5.4	0.003		
GE5C	5	14	6	4	10	0.3	0.3	13	3.6	9.1	0.005		
GE6C	6	14	6	4	10	0.3	0.3	13	3.6	9.1	0.004		
GE8C	8	16	8	5	13	0.3	0.3	15	5.8	14	0.007		
GE10C	10	19	9	6	16	0.3	3	12	8.6	21	0.011		
GE12C	12	22	10	7	18	0.3	3	10	11	28	0.017		
GE15C	15	26	12	9	22	0.3	0.3	8	18	45	0.026		
GE17C	17	30	14	10	25	0.3	3	10	22	56	0.04		
GE20C	20	35	16	12	29	0.3	0.3	9	31	78	0.064		
GE25C	25	42	20	16	35.5	0.6	0.6	7	51	127	0.115		
GE30C	30	47	22	18	40.7	0.6	0.6	6	65	166	0.149		
GE35C	35	55	25	20	47	0.6	1	6	84	211	0.228		
GE40C	40	62	28	22	53	0.6	1	7	104	262	0.318		
GE45C	45	68	32	25	60	0.6	1	7	135	337	0.421		
GE50C	50	75	35	28	66	0.6	1	6	166	415	0.562		