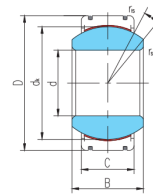
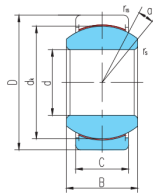
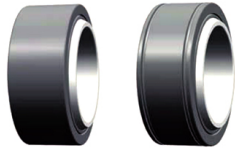


GE...ET-2RS(d 15□120)



GE...ET-2RS

GE...XT-2RS

Seleccione	Consulta	Número de rodamiento	Dimensiones (mm)								Clasificación de carga básica (kN)		Peso corazón kg
			dk	D	segundo :	do:	d _k	r _s min	r _{1s} min	un°	cr	corazón	
GE15ET-2RS	15	26	12	9	22	0.3	0.3	8	25	59	0.026		
GE17ET-2RS	17	30	14	10	25	0.3	0.3	10	32	75	0.04		
GE20ET-2RS	20	35	16	12	29	0.3	0.3	9	45	104	0.064		
GE25ET-2RS	25	42	20	16	35.5	0.6	0.6	7	85	204	0.115		
GE30ET-2RS	30	47	22	18	40.7	0.6	0.6	6	110	263	0.149		
GE35ET-2RS	35	55	25	20	47	0.6	1	6	140	338	0.228		
GE40ET-2RS	40	62	28	22	53	0.6	1	7	175	419	0.318		
GE45ET-2RS	45	68	32	25	60	0.6	1	7	225	540	0.421		
GE50ET-2RS	50	75	35	28	66	0.6	1	6	275	665	0.562		
GE55ET-2RS	55	85	40	32	74	0.6	1	7	355	852	0.864		
GE60ET-2RS	60	90	44	36	80	1	1	6	430	1030	1.03		
GE70ET-2RS	70	105	49	40	92	1	1	6	550	1320	1.57		
GE80ET-2RS	80	120	55	45	105	1	1	6	705	1700	2.32		
GE90ET-2RS	90	130	60	50	115	1	1	5	860	2070	2.79		
GE100ET-2RS	100	150	70	55	130	1	1	7	1070	2570	4.44		
GE110ET-2RS	110	160	70	55	140	1	1	6	1150	2770	4.83		
GE120ET-2RS	120	180	85	70	160	1	1	6	1680	4030	8.11		