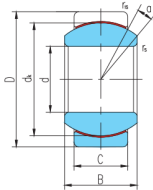
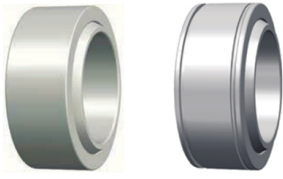
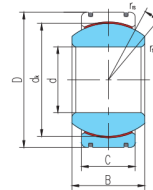


GE...ET/X(d 15□60)



GE...ET/X



GE...XT/X

Seleccione Consulta	Número de rodamiento	Dimensiones (mm)									Clasificación de carga básica (kN)		Peso corazón kg
		dk	D	segundo :	do:	d _k	r _s min	r _{1s} min	un°	cr	corazón		
GE15ET/X	15	26	12	9	22	0.3	0.3	8	25	59	0.026		
GE17ET/X	17	30	14	10	25	3	0.3	10	32	75	0.04		
GE20ET/X	20	35	16	12	29	0.3	0.3	9	45	104	0.064		
GE25ET/X	25	42	20	16	35.5	0.6	0.6	7	85	204	0.115		
GE30ET/X	30	47	22	18	40.7	0.6	0.6	6	110	263	0.149		
GE35ET/X	35	55	25	20	47	0.6	1	6	140	338	0.228		
GE40ET/X	40	62	28	22	53	0.6	1	7	175	419	0.318		
GE45ET/X	45	68	32	25	60	0.6	1	7	225	540	0.421		
GE50ET/X	50	75	35	28	66	0.6	1	6	275	665	0.562		
GE55ET/X	55	85	40	32	74	0.6	1	7	355	852	0.864		
GE60ET/X	60	90	44	36	80	1	1	6	430	1030	1.03		