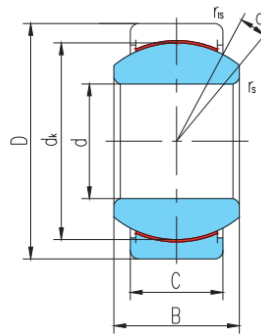
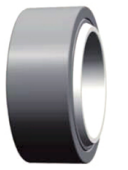


GEZ...ET-2RS(d 19.05□152.4)



Seleccione	Consulta	Número de rodamiento	Dimensiones (mm)								Clasificación de carga básica (kN)		Peso corazón kg
			dk	D	segundo ;	do:	dk	rs min	r1s min	un°	cr corazón		
GEZ19ET-2RS	19.05	31.75	16.662	14.275	27.5	0.3	0.6	6	50	117	0.053		
GEZ19ET-2RS	0.75	1.25	0.656	0.562	1.081	0.012	0.024	6	50	117	0.053		
GEZ22ET-2RS	22.225	36.513	19.431	16.662	32	0.3	0.6	6	69	160	0.085		
GEZ22ET-2RS	0.875	1.4375	0.756	0.656	1.258	0.012	0.024	6	69	160	0.085		
GEZ25ET-2RS	25.4	41.275	22.225	19.05	36.5	0.3	0.6	6	104	250	0.121		
GEZ25ET-2RS	1	1.625	0.875	0.75	1.437	0.012	0.024	6	104	250	0.121		
GEZ31ET-2RS	31.75	50.8	27.762	23.8	45.5	0.6	0.6	6	160	390	0.23		
GEZ31ET-2RS	1.25	2	1.093	0.937	1.788	0.024	0.024	6	160	390	0.23		
GEZ34ET-2RS	34.925	55.563	30.15	26.187	49	0.6	1	5	190	460	0.35		
GEZ34ET-2RS	1.375	2.1875	1.187	1.031	1.926	0.024	0.04	5	190	460	0.35		
GEZ38ET-2RS	38.1	61.913	33.325	28.575	54.7	0.6	1	6	235	560	0.42		
GEZ38ET-2RS	1.5	2.4375	1.312	1.125	2.154	0.024	0.04	6	235	560	0.42		
GEZ44ET-2RS	44.45	71.438	38.887	33.325	63.9	0.6	1	6	320	765	0.64		
GEZ44ET-2RS	1.75	2.8125	1.531	1.312	2.511	0.024	0.04	6	320	765	0.64		
GEZ50ET-2RS	50.8	80.963	44.45	38.1	73	0.6	1	6	415	1000	0.93		
GEZ50ET-2RS	2	3.1875	1.75	1.5	2.869	0.024	0.04	6	415	1000	0.93		
GEZ57ET-2RS	57.15	90.488	50.013	42.85	82	0.6	1	6	525	1260	1.3		
GEZ57ET-2RS	2.25	3.5625	1.969	1.687	3.223	0.024	0.04	6	525	1260	1.3		
GEZ63ET-2RS	63.5	100.013	55.55	47.625	92	1	1	6	655	1570	1.85		
GEZ63ET-2RS	2.5	3.9375	2.187	1.875	3.616	0.04	0.04	6	655	1570	1.85		
GEZ69ET-2RS	69.85	111.125	61.112	52.375	100	1	1	6	785	1880	2.4		
GEZ69ET-2RS	2.75	4.375	2.406	2.062	3.937	0.04	0.04	6	785	1880	2.4		
GEZ76ET-2RS	76.2	120.65	66.675	57.15	109.5	1	1	6	935	2250	3.1		
GEZ76ET-2RS	3	4.75	2.625	2.25	4.303	0.04	0.04	6	935	2250	3.1		
GEZ82ET-2RS	82.55	130.175	72.238	61.9	119	1	1	6	1100	2650	3.8		

GEZ...ET-2RS(d 19.05□152.4)

GEZ82ET-2RS	3.25	5.125	2.844	2.437	4.685	0.04	0.04	6	1100	2650	3.8
GEZ88ET-2RS	88.9	139.7	77.775	66.675	128	1	1	6	1280	3070	4.8
GEZ88ET-2RS	3.5	5.5	3.062	2.625	5.04	0.04	0.04	6	1280	3070	4.8
GEZ95ET-2RS	95.25	149.225	83.337	71.425	137	1	1	6	1460	3520	5.8
GEZ95ET-2RS	3.75	5.875	3.281	2.812	5.393	0.04	0.04	6	1460	3520	5.8