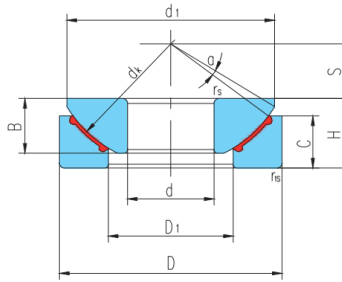
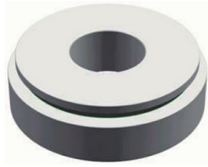


GX..N(d 17-120)



Seleccione Consulta		Número de rodamiento	Dimensiones (mm)										Clasificación de carga básica (kN)	Peso corazón kg
		dk	D	segundo :	do:	H	dk	S	d1 máximo	D1 min	rsr _{rs} min	un°	cr	corazón
GX17N	17	47	11.8	11.2	16	52	11	43.5	27	0.6	4	32	52	0.137
GX20N	20	55	14.5	13.8	20	60	12.5	50	31	1	5	44	71	0.246
GX25N	25	62	16.5	16.7	22.5	68	14	58.5	34.5	1	5	65	104	0.415
GX30N	30	75	19	19	26	82	17.5	70	42	1	5	88	141	0.614
GX35N	35	90	22	20.7	28	98	22	84	50.5	1	5	129	207	0.973
GX40N	40	105	27	21.5	32	114	24.5	97	59	1	6	169	270	1.59
GX45N	45	120	31	25.5	36.5	128	27.5	110	67	1	6	230	368	2.24
GX50N	50	130	33	30.5	42.5	139	30	120	70	1	6	262	420	3.14
GX60N	60	150	37	34	45	160	35	140	84	1	6	374	599	4.63
GX70N	70	160	42	36.5	50	176	35	153	94.5	1	3	451	722	5.37
GX80N	80	180	43.5	38	50	197	42.5	172	107.5	1	4	558	893	6.91
GX100N	100	210	51	46	59	222	45	198	127	1.1	4	717	1140	11
GX120N	120	230	53.5	50	64	250	52.5	220	145	1.1	3	839	1340	14