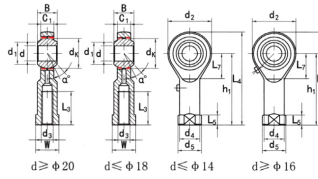


SIBP...S(d 5□30)



Seleccione	Consulta	Número de rodamiento	Dimensiones (mm)															Clasificación de carga básica (kN)		Peso corazón kg
			dk	d ₃ 6H	segundo :	C1	l ₃ min	w	d ₂	d ₁	h ₁	l ₇ min	l ₄	l ₅	d ₄	d ₅	d _k	a	cr	
SIBP4S	4	M4x0.7	7	5.25	8	8	14	6.5	24	7	31	4	8	9.5	9.525	13	3	5	0.009	
SIBP5S	5	M5x0.8	8	6	10	9	16	7.7	27	8	35	4	8.5	11	11.11	13	3.25	5.7	0.016	
SIBP6S	6	M6x1.0	9	6.75	12	11	18	8.96	30	9	39	5	10	13	12.7	13	4.3	7.2	0.022	
SIBP8S	8	M8x1.25	12	9	16	14	22	10.4	36	11	47	5	12.5	16	15.875	14	7.2	11.6	0.047	
SIBP10S	10	M10x1.5	14	10.5	20	17	26	12.9	43	13	56	6.5	15	19	19.05	13	10	14.5	0.077	
SIBP10S/B1	10	M10x1.25	14	10.5	20	17	26	12.9	43	13	56	6.5	15	19	19.05	13	10	14.5	0.077	
SIBP12S	12	M12x1.75	16	12	22	19	30	15.4	50	15	65	6.5	17.5	22	22.225	13	13.4	17	0.1	
SIBP12S/B2	12	M12x1.25	16	12	22	19	30	15.4	50	15	65	6.5	17.5	22	22.225	13	13.4	17	0.1	
SIBP14S	14	M14x2.0	19	13.5	25	22	34	16.9	57	17	74	8	20	25	25.4	16	17	24	0.16	
SIBP14S/B1	14	M14x1.5	19	13.5	25	22	34	16.9	57	17	74	8	20	25	25.4	16	17	24	0.16	
SIBP16S	16	M16x2.0	21	15	28	22	40	19.4	64	20	84	8	22	27	28.575	15	21.6	28.5	0.22	
SIBP16S/B1	16	M16x1.5	21	15	28	22	40	19.4	64	20	84	8	22	27	28.575	15	21.6	28.5	0.22	
SIBP18S	18	M18x1.5	23	16.5	32	27	44	21.9	71	22	93	10	25	31	31.75	15	26	42.5	0.32	
SIBP20S	20	M20x1.5	25	18	33	30	50	24.4	77	25	102	10	27.5	34	34.925	14	31.5	42.5	0.42	
SIBP22S	22	M22x1.5	28	20	37	32	54	25.8	84	27	111	12	30	38	38.1	15	38	57	0.54	
SIBP25S	25	M24x2.0	31	22	42	36	60	29.6	94	30	124	12	33.5	42	42.86	15	47.5	68	0.73	
SIBP28S	28	M27x2.0	35	24	48	41	66	32.3	103	33	136	14	37	46	47.63	15	58	75	0.98	
SIBP30S	30	M30x2.0	37	25	51	41	70	34.8	110	35	145	15	40	50	50.8	17	64	88	1.1	
SIBP30-1S	30	M27x2.0	37	25	51	41	70	34.8	110	35	145	15	40	50	50.8	17	64	88	1.1	