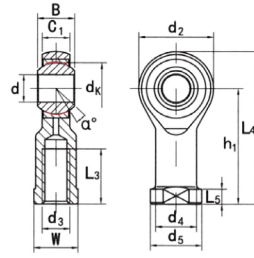


SJK...C(d 5□30)



Seleccione	Consulta	Número de rodamiento	Dimensiones (mm)														Clasificación de carga		Peso corazón kg
			dk	d ₃ 6H	segundo :	C1	l ₃ min	w	d ₂	h ₁	L ₄	L ₅	d ₄	d ₅	d _k	a	cr	corazón kN	
SJK5C	5	M5x0.8	8	6	10	9	18	27	36	4	8.5	11	11.11	13	5.7	6	0.016		
SJK6C	6	M6x1.0	9	6.75	12	11	20	30	40	5	10	13	12.7	13	7.2	7.65	0.022		
SJK8C	8	M8x1.25	12	9	16	14	24	36	48	5	12.5	16	15.875	14	11.6	12.9	0.047		
SJK10C	10	M10x1.5	14	10.5	20	17	28	43	57	6.5	15	19	19.05	13	14.5	18	0.077		
SJK10C/B1	10	M10x1.25	14	10.5	20	17	28	43	57	6.5	15	19	19.05	13	14.5	18	0.077		
SJK12C	12	M12x1.75	16	12	22	19	32	50	66	6.5	17.5	22	22.225	13	17	24	0.1		
SJK12C/B2	12	M12x1.25	16	12	22	19	32	50	66	6.5	17.5	22	22.225	13	17	24	0.1		
SJK14C	14	M14x2.0	19	13.5	25	22	36	57	75	8	20	25	25.4	16	24	31	0.16		
SJK14C/B1	14	M14x1.5	19	13.5	25	22	36	57	75	8	20	25	25.4	16	24	31	0.16		
SJK16C	16	M16x2.0	21	15	28	22	42	64	85	8	22	27	28.575	15	28.5	39	0.22		
SJK16C/B1	16	M16x1.5	21	15	28	22	42	64	85	8	22	27	28.575	15	28.5	39	0.22		
SJK18C	18	M18x1.5	23	16.5	32	27	44	71	93	10	25	31	31.75	15	42.5	47.5	0.32		
SJK20C	20	M20x1.5	25	18	33	30	50	77	102	10	27.5	34	34.925	14	42.5	57	0.42		
SJK22C	22	M22x1.5	28	20	37	32	54	84	111	12	30	38	38.1	15	57	68	0.54		
SJK25C	25	M24x2.0	31	22	42	36	60	94	124	12	33.5	42	42.86	15	68	85	0.72		
SJK28C	28	M27x2.0	35	24	51	41	66	103	136	14	37	46	47.63	15	86	107	0.82		
SJK30C	30	M30x2.0	37	25	51	41	70	110	145	15	40	50	50.8	17	88	114	1.1		
SJK30-1C	30	M27x2.0	37	25	51	41	70	110	145	15	40	50	50.8	17	88	114	1.1		
SJK35C	35	M36x2.0	43	28	56	50	81	125	165.5	17	46	58	57.15	16	-	-	1.6		
SJK40C	40	M42x2.0	49	33	60	55	91	142	187.5	19	53	65	66.67	16	-	-	2.4		
SJK50C	50	M48x2.0	60	45	65	65	117	160	218.5	23	65	75	82.5	12	-	-	5		