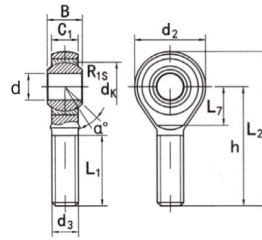


SAJK...C(d 5□30)



Clasificación de carga básica (kN)

Peso corazón kg

Seleccione	Consulta	Número de rodamiento	Dimensiones (mm)												cr	corazón kg
			dk	d ₃ 6g	segundo :	C ₁	L ₁ min	d ₂	L ₇ min	h	L ₂	d _k	r ₁	a		
SAJK5C	5	M5x0.8	8	6	19	18	—	33	42	11.11	0.3	13	5.7	6	0.013	
SAJK6C	6	M6x1.0	9	6.75	21	20	—	36	46	12.7	0.3	13	7.2	7.65	0.02	
SAJK8C	8	M8x1.25	12	9	25	24	—	42	54	15.875	0.3	14	11.6	12.9	0.038	
SAJK10C	10	M10x1.5	14	10.5	28	28	—	48	62	19.05	0.3	13	14.5	18	0.055	
SAJK12C	12	M12x1.75	16	12	32	32	—	54	70	22.225	0.3	13	17	24	0.085	
SAJK12C/B2	12	M12x1.25	16	12	32	32	—	54	70	22.225	0.3	13	17	24	0.085	
SAJK14C	14	M14x20	19	13.5	36	36	18	60	78	25.4	0.3	16	24	31	0.14	
SAJK16C	16	M16x2.0	21	15	37	42	21	66	87	28.575	0.3	15	28.5	39	0.21	
SAJK16C/B1	16	M16x1.5	21	15	37	42	21	66	87	28.575	0.3	15	28.5	39	28	
SAJK18C	18	M18x1.5	23	16.5	41	44	22	72	94	31.75	0.3	15	42.5	47.5	0.28	
SAJK20C	20	M20x1.5	25	18	45	50	25	78	103	34.925	0.3	14	42.5	57	0.38	
SAJK22C	22	M22x1.5	28	20	48	54	27	84	111	38.1	0.3	15	57	68	0.48	
SAJK25C	25	M24x2.0	31	22	55	60	30	94	124	42.86	0.3	15	68	85	0.64	
SAJK28C	28	M27x2.0	35	24	62	66	33	103	136	47.63	0.3	15	86	107	0.8	
SAJK30C	30	M30x2.0	37	25	66	70	35	107	145	50.8	0.3	17	88	114	1.1	
SAJK35C	35	M36x2.0	43	28	85	81	40	125	180.5	57.15	0.3	16	—	—	1.64	
SAJK40C	40	M42x2.0	49	33	90	91	45	142	195.5	66.67	0.3	17	—	—	2.3	
SAJK50C	50	M48x2.0	60	45	105	117	58	160	243.5	82.5	0.3	12	—	—	4.8	