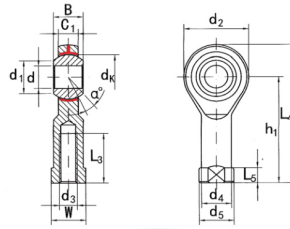


SIBP...N(d 5□20)



Seleccione	Consulta	Número de rodamiento	Dimensiones (mm)																	Clasificación de carga básica (kN)		Peso corazón kg
			dk	d ₃ 6H	segundo :	C1	L ₃ min	w	d ₂	d ₁	h ₁	L ₇ min	L ₄	L ₅	d ₄	d ₅	dk	a	cr	corazón		
SIBP4N	4	M4x0.7	7	5.25	8	8	14	6.5	24	7	31	4	8	9.5	9.525	13	3	5	0.009			
SIBP5N	5	M5x0.8	8	6	10	9	16	7.7	27	8	35	4	8.5	11	11.11	13	3.25	5.7	0.016			
SIBP6N	6	M6x1.0	9	6.75	12	11	18	8.96	30	9	39	5	10	13	12.7	13	4.3	7.2	0.022			
SIBP8N	8	M8x1.25	12	9	16	14	22	10.4	36	11	47	5	12.5	16	15.875	14	7.2	11.6	0.047			
SIBP10N	10	M10x1.5	14	10.5	20	17	26	12.9	43	13	56	6.5	15	19	19.05	13	10	14.5	0.077			
SIB P10N/B1	10	M10x1.25	14	10.5	20	17	26	12.9	43	13	56	6.5	15	19	19.05	13	10	14.5	0.077			
SIBP12N	12	M12x1.75	16	12	22	19	30	15.4	50	15	65	6.5	17.5	22	22.225	13	13.4	17	0.1			
SIBP12N/B2	12	M12x1.25	16	12	22	19	30	15.4	50	15	65	6.5	17.5	22	22.225	13	13.4	17	0.1			
SIBP14N	14	M14x2.0	19	13.5	25	22	34	16.9	57	17	74	8	20	25	25.4	16	17	24	0.16			
SIBP14N/B1	14	M14x1.5	19	13.5	25	22	34	16.9	57	17	74	8	20	25	25.4	16	17	24	0.16			
SIBP16N	16	M16x2.0	21	15	28	22	40	19.4	64	20	84	8	22	27	28.575	15	21.6	28.5	0.22			
SIBP16N/B1	16	M16x1.5	21	15	28	22	40	19.4	64	20	84	8	22	27	28.575	15	21.6	28.5	0.22			
SIBP18N	18	M18x1.5	23	16.5	32	27	44	21.9	71	22	93	10	25	31	31.75	15	26	42.5	0.32			
SIBP20N	20	M20x1.5	25	18	33	30	50	24.4	77	25	102	10	27.5	34	34.925	14	31.5	42.5	0.42			
SIBP22N	22	M22x1.5	28	20	37	32	54	25.8	84	27	111	12	30	38	38.1	15	38	57	0.54			
SIBP25N	25	M24x2.0	31	22	42	36	60	29.6	94	30	124	12	33.5	42	42.86	15	47.5	68	0.73			
SIBP28N	28	M27x2.0	35	24	48	41	66	32.3	103	33	136	14	37	46	47.63	15	58	75	0.98			
SIBP30N	30	M30x2.0	37	25	51	41	70	34.8	110	35	145	15	40	50	50.8	17	64	88	1.1			
SIBP30-1N	30	M27x2.0	37	25	51	41	70	34.8	110	35	145	15	40	50	50.8	17	64	88	1.1			