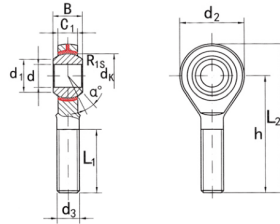


# SABP...N(d 5□20)



Seleccione	Consulta	Número de rodamiento	Dimensiones (mm)													Clasificación de carga básica (kN)	Peso corazón kg
			dk	d <sub>3</sub> 6g	segundo :	C <sub>1</sub>	L <sub>1</sub> min	d <sub>1</sub>	d <sub>2</sub>	h	L <sub>2</sub>	d <sub>k</sub>	r <sub>1</sub>	a	cr		
SABP5N	5	M5x0.8	8	6	20	7.7	16	33	41	11.11	0.3	13	3.25	5.7	0.013		
SABP6N	6	M6x1.0	9	6.75	22	8.96	18	36	45	12.7	0.3	13	4.3	7.2	0.02		
SABP8N	8	M8x1.25	12	9	25	10.4	22	42	53	15.875	0.3	14	7.2	11.6	0.03		
SABP10N	10	M10x1.5	14	10.5	29	12.9	26	48	61	19.05	0.3	13	10	14.6	0.055		
SABP12N	12	M12x1.75	16	12	33	15.4	30	54	69	22.225	0.3	13	13.4	17	0.085		
SABP12N/B2	12	M12x1.25	16	12	33	15.4	30	54	69	22.225	0.3	13	13.4	17	0.085		
SABP14N	14	M14x2.0	19	13.5	36	16.9	34	60	77	25.4	0.3	16	17	24	0.14		
SABP16N	16	M16x2.0	21	15	40	19.4	40	66	86	28.575	0.3	15	21.6	28.5	0.21		
SABP16N/B1	16	M16x1.5	21	15	40	19.4	40	66	86	28.575	0.3	15	21.6	28.5	0.21		
SABP18N	18	M18x1.5	23	16.5	44	21.9	44	72	94	31.75	0.3	15	26	42.5	0.28		
SABP20N	20	M20x1.5	25	18	47	24.4	50	78	103	34.925	0.3	14	31.5	52.5	0.38		
SABP22N	22	M22x1.5	28	20	51	25.8	54	84	111	38.1	0.3	15	38	57	0.48		
SABP25N	25	M24x2.0	31	22	57	29.6	60	94	124	42.86	3	15	47.5	68	0.64		
SABP28N	28	M27X2.0	35	24	62	32.3	66	103	136	47.63	0.3	15	58	75.5	0.96		
SABP30N	30	M30x2.0	37	25	66	34.8	70	110	145	50.8	0.3	17	64	88	1.1		