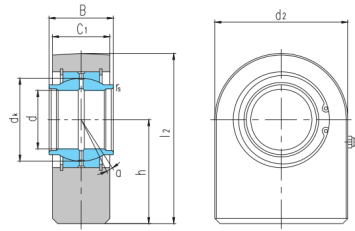
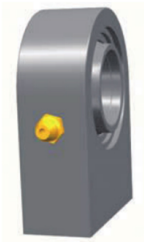


SFEW...ES(d 20-110)



Seleccione	Consulta	Número de rodamiento	Dimensiones (mm)									Clasificación de carga básica (kN)		Peso corazón kg
			dk	segundo :	d _k	C ₁	d ₂	h	l ₂	r _s	un°	cr	corazón	
SFEW20ES	20	20	29	19	50	38	63	0.3	4	30	67	0.37		
SFEW25ES	25	25	35.5	23	55	45	72.5	0.6	4	48	69	0.54		
SFEW32ES	32	32	43	27	70	65	100	0.6	4	65	168	1.16		
SFEW40ES	40	40	53	35	100	69	119	0.6	4	99	305	2.57		
SFEW50ES	50	50	66	40	123	88	149.5	0.6	4	156	441	4.5		
SFEW63ES	63	63	83	50	145	107	179.5	1	4	253	591	7.14		
SFEW70ES	70	70	92	55	164	115	197	1	4	313	724	10.86		
SFEW80ES	80	80	105	60	180	141	231	1	4	400	804	15.33		
SFEW90ES	90	90	115	65	226	150	263	1	4	488	1340	24		
SFEW100ES	100	100	130	70	250	170	295	1	4	607	1516	33.44		
SFEW110ES	110	110	140	80	295	185	332.5	1	4	654	2340	49.46		