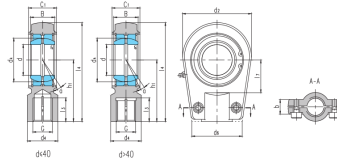


# SIR...ES(d 20-120)



Seleccione	Consulta	Número de rodamiento	Dimensiones (mm)															Clasificación de carga básica (kN)		Peso Screw kg
			dk	segundo	d <sub>k</sub>	C <sub>1</sub>	d <sub>2</sub>	G	6H	h <sub>1</sub>	l <sub>3</sub>	l <sub>4</sub>	l <sub>7</sub>	d <sub>1</sub>	d <sub>6</sub>	b	r <sub>s</sub>	un°	cr	
SIR20ES	20	16	29	19	56	M16x1.5	50	17	80	25	25	46	20	0.3	9	30	81	M8x20	0.44	
SIR25ES	25	20	35.5	23	56	M16x1.5	50	17	80	25	25	46	21	0.6	7	48	72	M8x20	0.47	
SIR30ES	30	22	40.7	28	64	M22x1.5	60	23	94	30	32	50	26	0.6	6	62	106	M8x25	0.77	
SIR35ES	35	25	47	30	78	M28X1.5	70	29	112	38	40	66	28	0.6	6	79	153	M10x30	1.24	
SIR40ES	40	28	53	35	94	M35X1.5	85	36	135	45	49	76	33	0.6	7	99	250	M10x35	2.12	
SIR50ES	50	35	66	40	116	M45x1.5	105	45	168	55	61	90	37	0.6	6	156	365	M12x40	3.74	
SIR60ES	60	44	80	50	130	M58x1.5	130	59	200	65	75	120	46	1	6	245	400	M16x45	6.49	
SIR70ES SIR70ES-D <sup>1)</sup>	70	49	92	55	154	M65X1.5	150	66	232	75	86	130	51	1	6	313	540	M16x50	9.88	
SIR80ES SIR80ES-D <sup>1)</sup>	80	55	105	60	176	M80x2	170	81	265	80	105	160	55	1	6	400	670	M20x55	14.2	
SIR90ES SIR90ESD <sup>1)</sup>	90	60	115	65	206	M100x2	210	101	323	90	124	180	60	1	5	488	980	M20x60	23.5	
SIR100ES	100	70	130	70	231	M110x2	235	111	360	105	138	200	65	1	7	607	1120	M24x65	32.14	
SIR110ES	110	70	140	80	266	M120x3	265	125	407	115	152	220	74	1	6	654	1700	M24x80	47.6	
SIR120ES	120	85	160	90	340	M130x3	310	135	490	140	172	257	84	1	6	950	2900	M24x80	72	