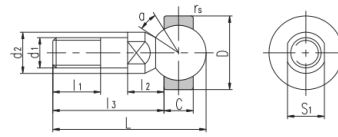
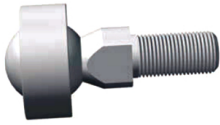


SQD..(d 5□16)



Seleccione	Consulta	Número de rodamiento	Dimensiones (mm)											Clasificación de carga básica (kN)		Peso kg
			d_1	d_2	l_1	l_2	L_3	L	S_1	do:	D	r_s min	un°	Static load ratings kN		
SQD5	M5	9	8	8	19	27.5	7	6	16	0.3	25	2	0.014			
SQD6	M6	10	11	8.8	23.8	33.5	8	6.75	18	0.3	25	3.2	0.021			
SQD8	M8	12	12	11.6	28.6	41	10	9	22	0.3	25	5.7	0.042			
SQD10	M10xl.25	14	15	14.2	34.2	49	11	10.5	26	0.3	25	9.2	0.067			
SQD12	M12xl.25	17	17	15.1	38.1	55.1	15	12	30	0.5	25	14	0.108			
SQD14	M14xl.5	19	22	16.8	51.3	70.7	17	13.5	34	0.5	20	19	0.167			
SQD16	M16X1.5	22	23	18	54.5	76.3	19	15	38	0.5	20	26	0.238			