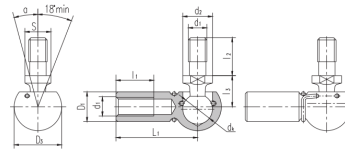


# SQG..(d 5□14)



Seleccione	Consulta	Número de rodamiento	Dimensiones (mm)											Static load ratings	
			$d_1$	$d_2$	$d_k$	$I_1$	$I_2$	$I_3$	$S$	$L_1$	$D_1$	$D_3$	$un^\circ$	kN	kg
SQG5	M5	8	8	10.2	10.2	9	7	22	8	12.8	10	2.2	0.015		
SQG6	M6	10	10	11.5	12.5	11	8	25	10	14.8	15	3.5	0.025		
SQG8	M8	14	13	14	16.5	13	11	30	13	19.3	15	6.6	0.053		
SQG10	M10	16	16	15.5	20	16	13	35	16	24	15	10	0.104		
SQG12	M12	16	16	15.5	20	16	13	35	16	24	15	16	0.104		
SQG14	M14X1.5	19	19	21.5	28	20	16	45	22	30	15	19	0.221		
SQG14/B5	M14X2	19	19	21.5	28	20	16	45	22	30	15	26	0.221		