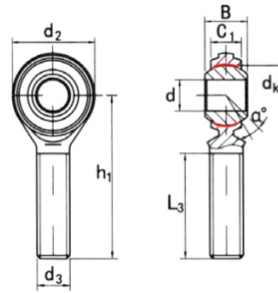


CM...T(d 4.826~19.05)



Selección Consulta		Part No.		Dimensiones (mm)									Lord ratings		Peso kg
		Right hand	Left hand	dk	d <sub>3</sub> UNF-3A	segundo :	C <sub>1</sub>	d <sub>2</sub>	h <sub>1</sub>	L <sub>3</sub> min	d <sub>k</sub>	a	KN		
CM3T	CML3T	4.826	10-32	7.92	5.94	15.875	31.75	19.05	11.1	10	8.02	0.014			
CM 4T	CML4T	6.35	V4-28	9.53	6.35	19.05	39.67	25.4	12.7	13.5	16.082	0.018			
CM5T	CML5T	7.938	5/16-24	11.1	7.92	22.23	47.63	31.75	15.88	11	28.693	0.032			
CM6T	CML6T	9.525	3/8-24	12.7	9.12	25.4	49.23	31.75	18.26	11	38.371	0.05			
CM 7T	CML7T	11.113	7/16-20	14.27	10.31	28.58	53.98	34.93	20.62	10.5	41.676	0.058			
CM8T	CML8T	12.7	V2-20	15.88	11.5	33.32	61.93	38.1	23.8	10	67.299	0.109			
CM 10T	CML10T	15.875	5/8-18	19.05	12.29	38.1	66.68	41.28	28.58	13	75.271	0.163			
CM 12T	CML12T	19.05	3/4-16	22.23	15.06	44.45	73.03	44.45	33.32	12	113.642	0.259			