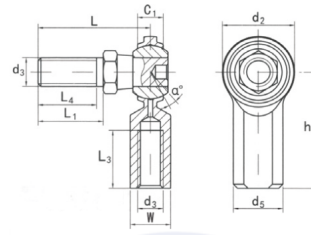


CF...Y,YS(d 15.88~44.45)



Seleccione Consulta		Part No.		Dimensiones (mm)										Lord	Peso
		Right hand	Left hand	d <sub>3</sub> UNF-2B	w	C <sub>1</sub>	d <sub>2</sub>	h <sub>1</sub>	L <sub>3</sub> min	L <sub>1</sub>	L <sub>4</sub>	d <sub>5</sub>	a ≈	KN	kg
CF3Y*	CFL3Y*	10-32	7.92	5.94	15.88	2697	127	25.4	12.7	111	10.31	10	9.427	0.023	
CF4Y	CFL4Y	1/4-28	9.53	6.35	19.05	33.32	17.45	26.19	14.27	12.7	11.91	135	14.269	0.027	
CF 5Y	CFL5Y	5/16-24	11.1	7.92	22.23	34.93	17.45	30.96	17.45	1506	12J	11	17.009	0.05	
CF6Y	CFL6Y	3/8-24	14.27	9.12	25.4	41.28	20.62	39.67	23.01	20.62	17.45	11	22.627	0.077	
CF7Y	CFL7Y	7/16-20	15.88	10.31	28.58	46.02	23.8	44.45	26.97	23.8	19.05	10.5	28.4	0.122	
CF8Y	CFL8Y	1/2-20	19.05	11.5	33.32	53.98	26.97	50.8	28.58	254	22.23	10	40.459	0.181	
CF 10Y	CFL10Y	5/8-18	22.23	12.29	38.1	63.5	34.93	63.5	38.1	34.93	25.4	13	43.203	0.308	
CF 12Y	CFL12Y	3/4-16	25.4	15.06	44.45	73.03	39.67	76.2	46.02	41.28	28.58	12	63.193	0.504	